

HIGH- PERFORMANCE SCANNING WITH FLEXIBLE NETWORK CONNECTIVITY



Ideal for businesses of all sizes, the compact imageFORMULA DR-S150 desktop scanner offers flexible USB and network connectivity, as well as a colour LCD touch screen for easy, intuitive operation.

Benefits

- **Big productivity** up to 90ipm colour scanning and large 60 sheet ADF
- **Flexible connectivity** options with LAN, WiFi and USB connectivity to PC and smart devices
- **Easy operation** using large colour touch screen and direct network PUSH scan function
- **Robust design** for workloads up to 4,000 scans/day
- **Automatic intelligent processing** with OCR, Barcode, 2D Code recognition
- **Versatile and reliable paper handling** of wide range documents, including passports and ID cards
- **Reduced IT and operational costs** with centralised scanner and user profile management
- **Tight security** with simple 4-PIN code access and various methods for user log-on authentication
- **CaptureOnTouch Pro** software for easy, yet powerful capture processing and integration tools
- **Customised integration** using plug-in connector SDKs

DR-S150

B&W AND COLOUR
SPEED
45 PPM / 90 IPM

SUGGESTED DAILY
VOLUME
4,000
SCANS/DAY

AUTOMATIC
DOCUMENT
FEEDER
60 SHEETS

INTERFACE
CONNECT BY
USB, LAN OR WIFI

imageFORMULA DR-S150

Discover fast, reliable and high-performance scanning, with easy operation via the large colour touch screen. LAN, WiFi or USB interface options allow flexible connectivity, for convenient use across all types of scanning applications and environments.

CONNECTIVITY

For flexible use anywhere in the office or in customer-facing locations, the DR-S150 connects both wired and wirelessly to the network, or in traditional method to a PC via USB. Documents can be scanned directly from the touch screen panel or using your PC or smart device.

BIG PRODUCTIVITY, SMALL FOOTPRINT

The DR-S150 seamlessly integrates into busy offices with multiple users, as well as customer facing environments. The compact footprint allows it to be placed in locations where space is limited. The device supports high speed colour scanning of up to 90 images per minute, and is capable of scanning batches of 60 sheets in a single operation. It can also handle heavy workloads of up to 4,000 scans per day, making it dependable and reliable for a range of jobs.



RELIABLE VERSATILE FEEDING

Scan various document types, with reliable feed and separation rollers to make batch scanning of mixed document types easy. You can scan a variety of documents, from thin to thick, including plastic ID cards, embossed cards, and even passports. With ultrasonic double-feed detection, you can be assured all documents are scanned and no information goes missing



EFFICIENCY

With one-touch scanning support, you can preconfigure jobs to take place at the touch of a button on the large colour touch LCD screen. Users can send their scans effortlessly to various destinations, and with the PUSH Scan function, you can send images directly to your output destination without routing via a PC connection.

OPTIMISED IMAGE QUALITY

Using Active Threshold mode various documents, whether they have faint text or patterned backgrounds, can be scanned and processed together without the need to change any settings, saving valuable time.

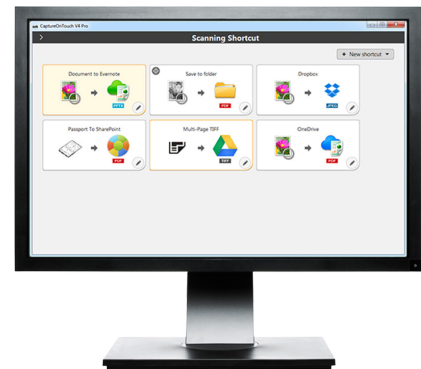


BOARDROOM



INTUITIVE SCANNING

CaptureOnTouch Pro offers a user-friendly interface using simple icon-based operation. Easily configure job button shortcuts for frequently performed scan tasks to save and send documents to multiple destinations, including cloud services. Automatically scan and separate batches of documents into separate files using various methods including zonal OCR, barcode and 2D code recognition. Output index data files for easier integration into existing workflows and document management systems.

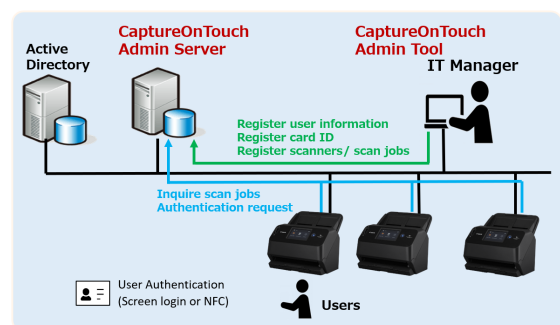


ADDED SECURITY

Ensure only those authorised can access the scanner with simple 4-PIN device activation. Using the DR-S150 scanner together with the CaptureOnTouch Admin server software, users can logon with active directory entering their user credentials on the scanner panel or by using a smart card with the optional NFC reader.

REDUCED IT OPERATIONAL COSTS

With CaptureOnTouch Admin server software, IT administrators can centrally or remotely configure and manage multi-fleet scanner environments, and user scan job profiles - saving time and minimising errors.



TECHNICAL SPECIFICATIONS

GENERAL PRODUCT INFORMATION

Type	Desktop Type Sheet Fed Scanner
Scanning sensor unit	CMOS CIS 1 Line Sensor
Optical resolution	600dpi
Light source	RGB LED
Scanning side	Front / Back / Duplex
Interface	USB 3.2 Gen1x1/USB 2.0, IEEE802.11b/g/n, 10Base-T/100Base-TX/1000Base-T
Dimensions (WxDxH)	Trays Closed: 291 x 247 x 242 mm Trays Opened: 291 x 600 x 378 mm
Weight	Approx. 3.3kg
Power requirements	AC 100-240V (50/60Hz)
Power consumption	Scanning: 22.5W or less Sleep Mode: 3.4W or less Power Turned Off: 0.1W or less
Operating environment	10 - 32.5 °C Humidity: 20 - 80% RH

SCANNING SPECIFICATIONS

Black and White	45ppm / 90ipm
Colour	45ppm / 90ipm
Output resolution	150 x 150dpi, 200 x 200dpi, 240 x 240dpi, 300 x 300dpi, 400 x 400dpi, 600 x 600dpi
Output mode	Monochrome (Active Threshold, Black & White, Error Diffusion, Advanced Text Enhancement, Advanced Text Enhancement II), 8-bit Greyscale (256-Level), 24-bit Colour
Suggested Daily Duty Cycle	Approx. 4000 scans

DOCUMENT SPECIFICATIONS

Width	50.8 - 216mm
Length	54 - 356mm
Thickness	20 - 209g/m ² (0.04 - 0.25mm)
Long document mode	3000mm Max
Business card scanning	Size: 50 x 85mm or larger Thickness: Less than 0.45 mm
Plastic card scanning	Size: 54 x 86mm Thickness: Less than 1.4mm (Embossed Card is supported)
Passport scanning	Up to 4mm thick (via carrier sheet)
Paper separation	Retard Roller Method
Feeder capacity	60-sheets (80g/m ²)

SPECIAL FEATURES

Barcode Module (Windows only), 2D Code Module (Windows only), Automatic Page Size Detection, Deskew, 3-Dimensional Colour Correction, Colour Dropout (RGB), Colour Enhancement (RGB), Auto Colour Detection, Shadow Cropping, MultiStream, Adjustable gamma settings, Skip Blank Page, Folio Mode, Scan Area Setting, Batch Separation with white blank sheet or patchcode (Windows only), Moiré Reduction, Prevent Bleed Through/Remove Background, Contrast Arrangement, Background Smoothing, Shadow Cropping, Auto Resolution Setting, Double Feed Release, Double Feed Detection (Ultrasonic Sensor, Length)

BUNDLED SOFTWARE

Windows OS	ISIS / TWAIN Driver CaptureOnTouch Pro CaptureOnTouch JobTool Wireless Connection Setup Tool CaptureOnTouch Admin Server (by download only) CaptureOnTouch Admin Tool (by download only)
Mac OS	Mac TWAIN Driver CaptureOnTouch CaptureOnTouch Job Tool Wireless Connection Setup Tool (All by download)

CONSUMABLES

Exchange Roller Kit, Passport Carrier Sheet, A4 Carrier Sheet

ACCESSORIES

Flatbed Scanner Unit 102
NFC Feeder Tray

Disclaimers

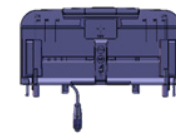
Scanning speed may vary depending on PC environment, scanner settings, and other factors. Specifications are subject to change without notice. Visit the Canon website for more information.

Accessories



A4 Flatbed Scanner Unit 102

Scan bound books, journals and fragile media up to A4 by adding the simple to connect, via USB cable, optional Flatbed Scanner Unit 102. The flatbed unit works seamlessly with the main scanner in a smooth dual-scanning operation that lets you apply the same image-enhancement features to any scan.



NFC Feeder Tray

To support quick and easy user login authentication by using a proximity card. NFC user authentication is made together with the CaptureOnTouch Admin software by registering the serial # of the proximity card to the user attribute in the Active Directory. Supported IC card type is Mifare (Type A) and FeliCa.

Software Developer Kit (SDK)

Software developer kits and tools are available through the Canon Developer Programme To register for the programme:

- Please visit the registration page - <https://developers.canon-europe.com/developers/s/login/SelfRegister>
- If you experience any issues signing up please contact CDP admin at cdp-admin@canon-europe.com

SDK available